

Project Accomplishments by AJCE Members

Project of Emergency Recovery of Four Causeways, the Democratic Socialist Republic of Sri Lanka

Principal Firm (s)

Oriental Consultants Co., Ltd.



Project Site

Sri Lanka

Client

Japan International Cooperation System(JICS)

Finance

Government of Japan

Period

August 2005 – June 2007

Type of Project

- ◆ Design Review of D/D
- ◆ Supervision of Construction
- ◆ Quality Assurance, Schedule and Safety Control

Project Objective

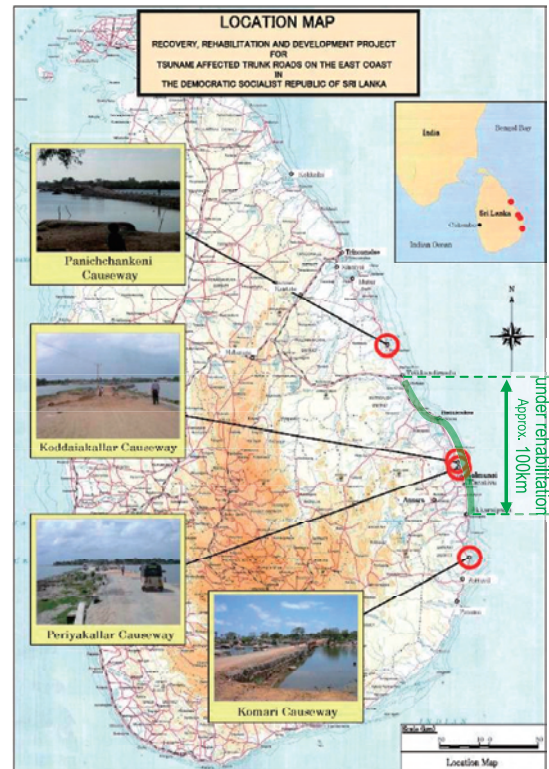
◆ to reconstruct four causeways damaged by the Tsunami of 26th December 2004 as a part of an Emergency Recovery Project, which are located on Route AA004 and AA015 roads in the East Coast of Sri Lanka.

Project Outline

- ◆ Four causeways, comprising;
 - i) Komari Causeway (Km334/2 on AA004)
 - ii) Periyakallar Causeway (Km396/3 on AA004)
 - iii) Kodkaikallar Causeway (Km398/1 on AA004)
 were reconstructed under the Desin-Built Contract. Panichchankeni Causeway (Km59/1 on AA015) was canceled because of aggravation of security situations.

Details

Oriental Consultants rendered professional services, which comprise preliminary design, design review and construction supervision. During the preliminary design, a feasibility study for a Rehabilitation Project was also carried out upon a part of the AA004 and AA015 trunk roads (100km). This rehabilitation project has been financed by JBIC Loan for its implementation and supervised by our firm.



Memorial Plates on Bridge
English, Sinhalese
Tamil, Japanese

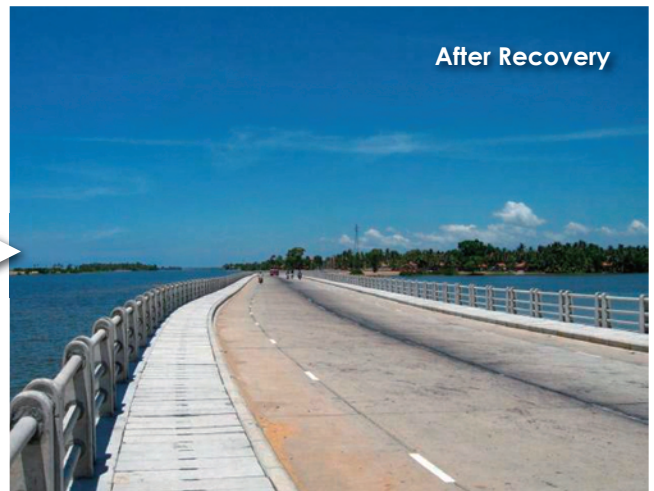
i) Komari Causeway (Total Width=10.0m: Carriageway: 3.5mx2, Walkway: 1.5mx2)
 Bridge: 52.12m 3-Span PSc Girder, Causeway Road: L=18.45m, Approach Road: L=189.43m



ii) Periyakallar Causeway (Total Width=13.6m: Carriageway: 3.5mx2, Cycle Lane: 1.5mx2, Walkway: 1.8mx2)
 Bridge: North 45.20m, South 104.00m PC Slab, Causeway Road: L=352.01m, Approach Road: L=223.12m



iii) Kodaikallar Causeway (Total Width=13.6m: Carriageway: 3.5mx2, Cycle Lane: 1.5mx2, Walkway: 1.8mx2)
 Bridge: 49.20m 12 Span PC Slab, Causeway Road: L=420.80m, Approach Road: L=160.00m



Other Design Details

Bridge: Spread Foundation, Concrete Pavement

Causeway Road: Concrete Pavement, Approach Road: DBST Pavement

Project Accomplishments by AJCE Members

SAPROF FOR WATER SUPPLY IMPROVEMENT PROJECT IN KURDISTAN REGION REPUBLIC OF IRAQ

Principal Firm (s) Nihon Suido Consultants Co., Ltd.


Project Site Sulaimaniya Governorate and Erbil Governorate Kurdistan Region, Republic of Iraq

Finance Japan Bank for International Cooperation (JBIC)

Period July 2007 - January 2008

Services Special Assistance for Project Formation



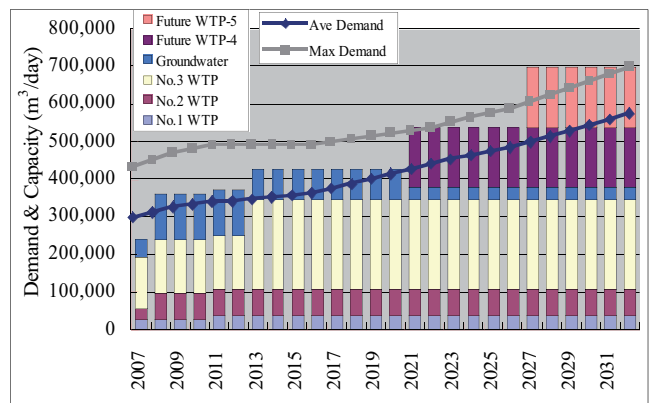
Erbil No.2 WTP and Background

Briefing

- ◆ The National Development Strategy for the Republic of Iraq emphasizes the important role that improving the water supply system will have in improving the quality of life.
- ◆ Infrastructure in Iraq has been damaged by wars and the resulting economic sanctions have limited the resources available for maintenance and development. Under the previous regime, the existing water supply conditions in the Kurdistan region deteriorated as there was insufficient investment for sustainable operation and maintenance.
- ◆ The Water Supply Improvement Project for the Kurdistan Region aims to rehabilitate and expand the water supply facilities to improve the water supply conditions in the target area. This will facilitate economic and social development in the Kurdistan region.

The SAPROF study includes:

- ◆ Review of Present Water Supply Conditions and Investigation on the Necessity of Implementation of the Project,
- ◆ Evaluation and Analysis on Scope of Work for the Project,
- ◆ Investigation and Verification on Framework of Project Implementation and Operation and Maintenance Systems, and
- ◆ Preparation of Implementation Program (I/P)



Erbil Water Demand and Planned Capacity

Project Accomplishments by AJCE Members

Seventh Bangkok Water Supply Improvement Project, Bangkok Thailand

Principal Firm (s)	Nihon Suido Consultants Co., Ltd. 
Project Site	Bangkok Thailand
Client	Metropolitan Waterworks Authority
Finance	Japan Bank for International Cooperation (JBIC)
Period	April 2001 – September 2007
Type of Project	<ul style="list-style-type: none"> ◆ Detail Design ◆ Bid and Bid Evaluation ◆ Construction Supervision



Maha Sawat Water Treatment Plant
Solid Contact Clarifier
210,000 m³/day, 63m in diameter
Manufacturers proposed design

Project Outline

- ◆ To increase production capacity by 400,000 m³/day of the Bang Khen Water Treatment Plant (WTP) for West Bank of the Chao Praya River,
- ◆ To increase production capacity by 400,000 m³/day of the Maha Sawat WTP for East Bank of the Chao Praya River, and
- ◆ To expand Sam Lae raw water pump station located at left bank of the Chao Pray River



Bang Khen Water Treatment Plant

Details

- ◆ Applying manufacturer's alternative design for clarifier and filter process for Maha Sawat WTP expansion works and pump stations upon bid evaluation on energy and/or chemical consumptions as well as price under Design-Build Contract,
- ◆ Plant expansion for Maha Sawat WTP from 800,000 m³/day to 1,200,000 m³/day,
- ◆ Plant expansion for Bang Khen WTP from 3,200,000 m³/day to 3,600,000 m³/day,
- ◆ Construction of No.3 Sam Lae Raw Water Pump Station with 1 set of pump rated at 500 m³/min,
- ◆ Construction of No.3 Transmission Pump Station at Bang Khen WTP with 3 sets of variable speed pump, 300 m³/min each,
- ◆ Construction of transmission tunnel, 2.5m in diameter x 2.5 km, and
- ◆ Installation of 1 set of transmission pump rated at 300m³/min with variable speed motor for No. 1 Maha Sawat Pump Station.

Project Accomplishments by AJCE Members

CAPACITY DEVELOPMENT PROJECT ON WATER QUALITY MANAGEMENT, Phase I, REPUBLIC OF THE PHILIPPINES

Principal Firm (s) CTI Engineering International Co., Ltd.



Project Site Region III, VI and XII in THE PHILIPPINES

Client Japan International Cooperation Agency (JICA)

Finance Japan International Cooperation Agency (JICA)

Period February 2006 –March 2008

Type of Project ♦ Technical Assistance Project

Project Outline

The project purpose is to strengthen capabilities of Central and Regional Offices (CO and ROs) of Environmental Management Bureau (EMB) under the Department of Environment and Natural Resources (DENR) to implement priority actions mandated by the Clean Water Act and its Implementing Rules and Regulations (CWA/IRR).

The said purposes are achieved through: 1) Establishing an integrated policy framework for WQM based on the CWA supported by adequate procedural guidelines and training for EMB staff; 2) Strengthening capacity of EMB CO to lead and support the ROs; 3) Strengthening capability of EMB ROs to establish and support Water Quality Management Areas (WQMA) and related institutions in 3 pilot regions; and 4) Strengthening overall capability of EMB ROs in water quality management in 3 pilot regions.

The project is ultimately expected to realize the goal as defined: "Under the initiative of the WQMA Governing Boards, Industries commercial entities, LGUs and other public organizations take necessary actions for achieving the water quality goal

established in the WQMA Action Plans." The project is to perform 40 activities identified to generate the four outputs in five years period.

Details

The Phase I of the Project completed 17 activities by the first quarter of 2008 in two-years-period.

It assisted EMB in developing a wide range of policy and technical guidelines, and designating the WQMAs and related institutions in the 3 pilot regions by mobilizing the regional efforts and resources to overcome institutional and organizational barriers. It further provided various training opportunities to the staff of all regions to shift toward institutional pluralism where central authority of environmental management is devolved to regional bodies.

The Phase II of the Project will perform 23 activities remaining in the current project portfolio in three-years-period.

Although the Project is by far the largest of the JICA funded water quality related technical assistance projects at the moment, it is further noteworthy that this is the first program of JICA in providing upstream service including policy development, which would contribute to addressing the water quality issues in other countries in the South East Asia, South Asia, the Middle East, Africa, Latin America and the Eastern Europe.



A workshop on WQMA Designation

Project Accomplishments by AJCE Members

Bawakaraeng Urgent Sediment Control Project, South Sulawesi Province, Indonesia

Principal Firm (s) CTI Engineering International Co., Ltd. and Associates



Project Site Indonesia

Client Government of the Republic of the Indonesia

Finance Japan Bank for International Cooperation (JBIC)

Period May 2005 - July 2007

Type of Project

- ◆ M/P, F/S & D/D
- ◆ Construction Supervision
- ◆ Regional/Community Development

- ◆ Preparation of Sabo Master Plan.
- Urgent Warning and Evacuation Systems:
 - ◆ Establishment of Manual Information transfer system and Preparation of hazard map.
 - ◆ Preparation & execution of monitoring by Community and filing of collected data.
- Urgent Sabo Works:
 - ◆ Construction of Sabo dam at the end of debris mass to mitigate the debris flow.
 - ◆ 5.4 million m³ of riverbed and reservoir excavation to reduce the sedimentation at Bili-Bili Dam.
- Regional/Community Development:
 - ◆ Support/assistance for Community Activities.
 - ◆ Implementation of Regional Development/ Livelihood Programs i.e. nursery training & paving block production.
 - ◆ Provision of water supply system and improvement of evacuation roads in the hazardous area.

Project Outline

Due to the mountain collapse at Mt. Bawakaraeng Caldera on March 26, 2004, more than 200 million m³ of debris was deposited in the caldera and the downstream area has been suffering from habitual sediment disasters. Under such conditions, the Project was prepared for the purpose of:

- ◆ To protect public assets including Bili-Bili dam reservoir, farmland and other facilities along the river,
- ◆ To mitigate secondary disaster due to the debris flow,
- ◆ To realize sustainable Sabo works and sand management, and
- ◆ To improve social welfare in the affected area in coordination with ISDM Concept.

Details

The measure outputs through the project are;

Urgent Investigations:

- ◆ Investigations of the Phenomena (Survey on further collapse, sediment discharge, sedimentation of Bili-Bili reservoir).
- ◆ Prediction of future phenomenon.



Debris flow attacking the New Sabo Dam on Feb. 16, 2007



Regional Development Program: Nursery Training

Project Accomplishments by AJCE Members

Thang Long Industrial Park Project (Phase 1,2 & 3), Vietnam

Principal Firm (s) Nippon Koei Co., Ltd.
NIPPON KOEI

Project Site Northern Hanoi, Vietnam

Client Thang Long Industrial Park Corporation

Finance Thang Long Industrial Park Corporation

Period 1997 - 2007

Type of Project ♦ Detailed Design
 ♦ Construction Supervision

Project Outline

- ♦ Thang Long Industrial Park (TLIP) was identified in the Master Plan of Industrial Development in Hanoi Area formulated under JICA technical assistance in 1995.
- ♦ TLIP was developed to serve as a major core for industrial development in the Northern Hanoi area with the objective of attracting foreign investors, particularly Japanese Manufacturers and high-tech industries, to locate thereto, and thus generating employment opportunities and creating a new town with massive housing.

Details

After the completion of feasibility study, Nippon Koei carried out the detailed design and construction supervision for development of TLIP.

The Project has been implemented in three phases:

First Phase Development:	121 ha
Second Phase Development:	74 ha
Third Phase Development:	80 ha

The principal development work are summarized as follows:



1. Land reclamation works
2. Infrastructure development works (water supply, sewerage, drainage, road & bridge)
3. Building works
4. Electrical system (power distribution)



Recall My Life with FIDIC and AJCE



Goro FUJIE
Ex-Secretary General

At the end of last September, 2007 I stepped aside Secretary-General of AJCE after 11-years serve and handed over to Dr. Yoshihiko Yamashita.

After almost 30 years my engagement of Project Finance Business at Mitsubishi Corporation in the areas South America, Middle-East and Asia, I started new job at AJCE. During Project Finance Business, I as a Project Owner had been working with Consulting Engineers to find suitable scheme for projects.

Based on this experience, I participated in FIDIC Annual Conference at Edinburgh 1997 as my debut when I found real subjects involved in CE-Industry and started to concrete life-long friendship to have been receiving their support for my job at AJCE. They still support AJCE Activities and I understand they are genuine Consulting Engineers who wish to maintain their designed projects at full-life period.

On 2000 with successful election of Dr.Yumio Ishii (Ex-President of AJCE) to FIDIC Executive Committee Member, Dr Ishii recommended me to attend EC Meeting as an attaché of Dr. Ishii and

Mr. Richard Kell (Ex-President FIDIC) permitted as special case .At the same time Mr. Kell created Governance Task Force and I also was recommended to a Member of this TF. This Task-Force is understood to make the first move for the reformation of FIDIC Activity to activate and as results of this Task Force resolution, FIDIC now continue to develop drastically.

FIDIC as entire representation of CE always have been facing continuous lawful and financial issues on Globalization of CE Industry because of being understood out of CE Profession. However apart from own profession, FIDIC and Member Associations have to equip complete knowledge of lawful, financial issues and to rush issuance of various global standard publication to be leader for public welfare under own efforts. To realize this purpose, it is recommended to strengthen and widen their activity of Contract Committee.

One final word, FIDIC and all Member Association with Affiliate Members are expected to perform your business without end. I Appreciating for your support past and future.

Message from New Runner

Yoshi YAMASHITA
Secretary General, AJCE



"Ekiden", Japanese style marathon hands over a sash from the former to the new runner. After 11 years of running as the secretary general of AJCE, Dr. Goro Fujie handed over his sash to me on October 1, 2007. My responsibility is to inherit former runners' accomplishments and run on new routes together with AJCE team members.

My first encounter with FIDIC was 1991 FIDIC Tokyo Conference. Dr. Ishii, chairman of CTI Engineering and past FIDIC ex-com member recommended me to serve as a moderator at the workshop for "Recycling of Materials". Since that time, I served for 16 years as a corresponding member of FIDIC as well as an active member of AJCE. It is my pleasure to serve as a new secretary general and to devote my term for promotion of status of consulting engineers in Japan.

Consulting engineering (CE) industry in Japan is quite different from that of others as approximately 95% of annual turn-over is from domestic market. However, this trend will change as the budget of public works has been cut at a rate of 3% each year which lead us to go into oversea market. In this respect, AJCE's role will be greater in future as we have resources and channels with FIDIC and its MAs.

In order for AJCE to contribute successfully in global markets, we firstly need to build up sound financial foundation. At the same time, we need to expand our activities leading to build capacity of member firms beyond what we have

accumulated through domestic experience. The ways to achieve first challenge would be to show clear vision to society as well as to member firms that AJCE operating globally in collaboration with FIDIC can promote business opportunities. Through continuous efforts for raising business opportunities, AJCE will be able to raise ourselves to be an attractive entity. As the consequences of these efforts, AJCE could establish firm financial basis by increased membership fee as well as by various value added services.

The second challenge is rather pleasant in nature. In order to help raising capacity of consulting engineers in Japan, collaboration with FIDIC is deemed to be quite sound and effective. As Dr. Fujie described in his article, we train ourselves to be well acquainted with FIDIC contract documents as well as various training tools. It is also useful to utilize training programs provided both by AJCE and FIDIC. In addition, collaboration with member firms of FIDIC can expand project capability while creating capacity of engineers in charge. AJCE would be able to serve as an integrator between oversea and domestic resources.

I would like to thank ex-com members of AJCE, management of CTI Engineering and to Dr. Goro Fujie for providing me with a chance to serve as new secretary general. It is my hope and dream that AJCE will evolve in future and as the consequences, consulting engineers in Japan integrate well in global market.

THE GLOBAL STAGE



Services Provided

Bridges, Roads, Tunnels, Seismic Design, Transportation Planning, Urban and Regional Planning, Environment, Information Technology, Civic Design, Railways, Construction Management and Supervision, River and Erosion Control, Ports, Airports, PFI, Facility Maintenance, and Sewerage

Overseas Projects

We provide engineering services for infrastructure development in many developing countries. We aim at achieving infrastructure that is in harmony with the surrounding environment and is also economical.



*The project for the Construction of a New Highway Bridge at Manampitiya
The Democratic Socialist Republic of Sri Lanka*



*Northern Economic Corridor Construction Project
Lao PDR*



ORIENTAL CONSULTANTS COMPANY LIMITED
-CONSULTING ENGINEERS-

16-28, Nanpeidai-Cho, Shibuya-Ku, Tokyo, 150-0036, Japan
Telephone: +81-3-6311-7570 E-mail: intl@oriconsul.co.jp
Facsimile: +81-3-6311-8020 Web Site: <http://www.oriconsul.co.jp>

Partnering in sustainable development

CTI Group stands ready to apply our broad range of experience to deliver the ultimate in professional services for several engineering and social development fields wherever and whenever required.

Disaster Management



Flood Forecasting and Warning system for Atlas Region, Morocco

Water Resources Development



Bili Bili Multipurpose Dam Project, Indonesia

Flood Control



Flood Mitigation in Ormoc City, Philippines

Land Transport Development



Improvement of Existing Bridges along Pasig River and Marikina River, Philippines

Social Study



Living Environment Improvement, Morocco

Environment



Environmental Monitoring Network, Egypt



CTI Engineering International Co., Ltd.

Consulting Engineers

Tachibana Annex Building, 2-25-14 Kameido, Koto-ku, Tokyo 136-071 Japan
 URL: <http://www.ctii.co.jp/> E-mail: info@ctii.co.jp

CTI Engineering Co., Ltd.

3-21-1 Nihombashi Hama-cho Chuo-ku, Tokyo 103-8430 Japan
 URL: <http://www.ctie.co.jp/> E-mail: koho@ctie.co.jp

Quality Water. Quality Life.



<http://www.nissuicon.co.jp>

Creating Clean Water Environment.



Nihon Suido Consultants Co.,Ltd.

HEAD OFFICE

22-1,Nishi-Shinjuku 6-Chome Shinjuku-ku,Tokyo 163-1122,Japan

Phone: +81-3-5323-6260 Fax: +81-3-5323-6487

OVERSEAS OFFICE

Jakarta,Indonesia Phone: +62-21-5744441

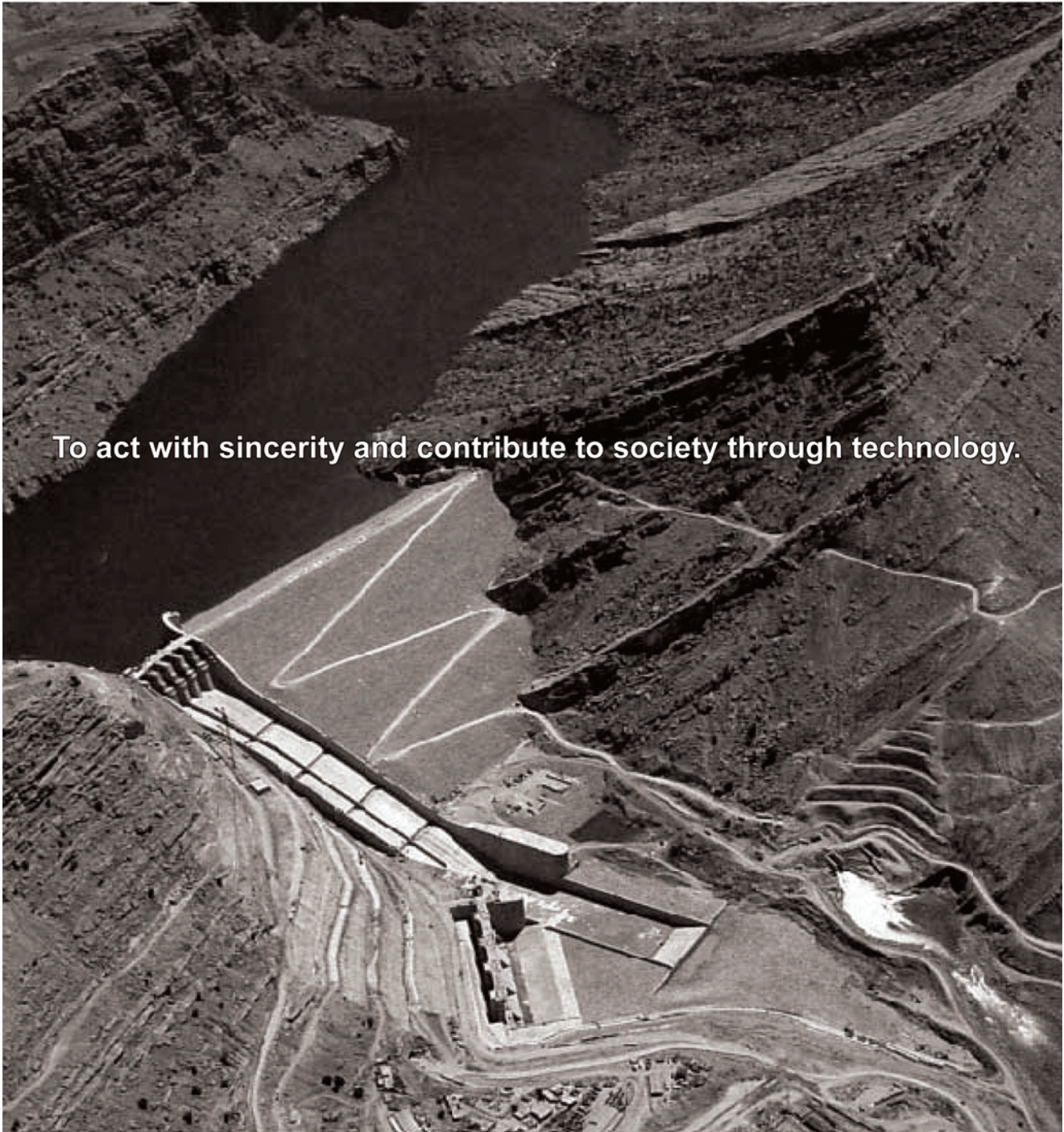
Seoul, Korea Phone: +82-2-3664-6306

Hanoi, Vietnam Phone: +84-4-512-2438



NIPPON KOEI

Challenging mind, Changing dynamics



To act with sincerity and contribute to society through technology.

NIPPON KOEI CO.,LTD.

4 Kojimachi 5-chome, Chiyoda-ku, Tokyo 102-8539, Japan Telephone:+81-3-3238-8030 Facsimile:+81-3-3238-8326

Overseas Consulting Administration

2 Kojimachi 4-chome, Chiyoda-ku, Tokyo 102-0083, Japan Telephone:+81-3-5276-3532 Facsimile:+81-3-5276-3002

<http://www.n-koei.co.jp> e-mail:int.a@gx.n-koei.co.jp

Water Resources Study in Cambodia



It's our pride
that our technology
supports the earth.



Microzoing Study in Turkey

Our competences are

- Disaster Risk Assessment / Management
- Water Resources Development
- Environmental Investigation / Evaluation
- Geotechnical Services



Water Quality Monitoring in Panama



OYO INTERNATIONAL CORPORATION

Rokubancho Kyodo Bldg. 2F, 6 Rokubancho, Chiyoda-ku, Tokyo 102-0085, Japan
TEL: +81-3-5211-5181 FAX: +81-3-5211-5184 E-mail: oic@oyointer.com



**Over 38 Years Experience
in
Long Span Bridges**

Shin-Saikaibashi Bridge
National Route No.202 Nagasaki pref. JAPAN



CHODAI CO.,LTD.
CONSULTING ENGINEERS & PLANNERS

■ Head Office 1-20-4, Nihonbashi-Kakigaracho, Chuo-ku, Tokyo 103-0014 JAPAN
URL <http://www.chodai.co.jp/> E-mail info@chodai.co.jp

TEL.03-3639-3301 FAX.03-3639-3366

Integrated Consultancy on Infrastructure Development and Environmental Conservation

What We Do

- ▶ River Planning & Water Resources Management
- ▶ Coastal Zone & Estuary Management
- ▶ Highways, Transportation & Urban Planning
- ▶ Disaster Risk Management, Mitigation & Restoration
- ▶ Infrastructure Asset Management
- ▶ Environmental Research
- ▶ Biological Survey, Species Identification & Analysis
- ▶ Environmental Impact Assessment, Habitat Conservation & Restoration
- ▶ Physical & Chemical Analysis, Environmental Risk Assessment & Management
- ▶ Value-added Weather Information via Internet & Mobile Phones



IDEA Consultants, Inc.
Infrastructure, Disaster, Environment, Amenity

<http://ideacon.jp/>

Head Office

3-15-1, Komazawa, Setagaya-ku, Tokyo 154-8585, Japan

TEL: +81-3-4544-7600

Tokyo Branch

6-17-19, Shinbashi, Minato-ku, Tokyo 105-0004, Japan

TEL: +81-3-5405-8150

METOCEAN Environment Inc. and NIKKEN Consultants, Inc. were merged and renamed as IDEA Consultants, Inc. on June 1, 2006.

***Towards the Creation of
a Safe and Sound Water
Environment....***

Applied to all offices consulting services / ISO 9001:2000 ISO 14001:2004



TOKYO ENGINEERING CONSULTANTS CO., LTD.

President HIROSHI KAMEDA

Head Office

Fuji Bldg., 3-7-4 Kasumigaseki, Chiyoda-ku, Tokyo 100-0013, Japan

Telephone : 81-3-3580-2418 Facsimile : 81-3-3591-0492

<http://www.ijnet.or.jp/tec-jimu/>

A Letter from AJCE OFFICE

I took over Goro-San's responsibility on Oct 1, 2007. Thanks to his 11 years of dedicated contributions! I feel quite fortunate to work with charming and highly motivated staffs as you can see from the illustration and their messages. As the rookery secretary general, I will listen to my staffs and members of AJCE and align myself to new challenging tasks. I do count on your support and advices.

Yoshi YAMASHITA, Secretary General

I serve green teas by the teapot as shown in the picture with sincere hospitality. Taste of green tea varies quite delicately depending on season and weather; fine, cloudy or rain. It is my pleasure to serve teas of the best taste. Hope you can visit us and confirm what I said

Kimie YOSHINO, Secretariat



During YPEP2007, I was stimulated by Australian and Japanese Young Professionals, who are same as my generation, they have positive endeavor on business as well as enjoying off-the-business time. It was my pleasure to exchange dialogues with them. I would like to support their further progress as much as I can.

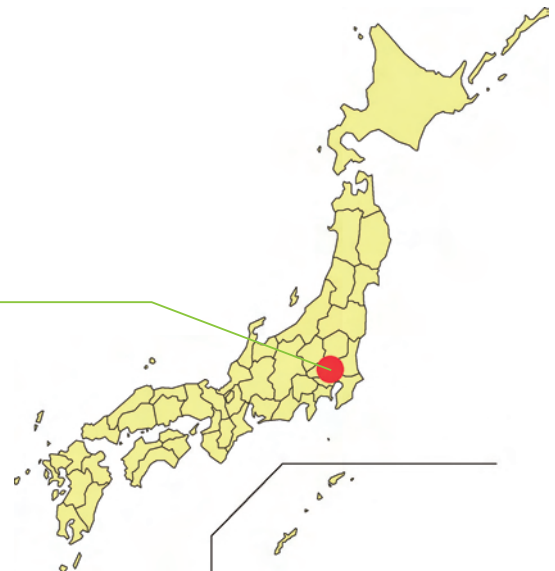
Saki TOMITA, Secretariat

History of AJCE

- 1974** Establishment
Joined as FIDIC Member Association
- 1991** FIDIC annual conference in TOKYO
- 2004** Celebrated the 30th anniversary

OFFICE

Address: 3-16-4, Ueno, Taito-ku, TOKYO 110-0005 JAPAN
 Tel : +81-3-389-8471 Fax: +81-3-389-8472
 Email: info@ajce.or.jp
 Web: <http://www.ajce.or.jp/en/index.htm>



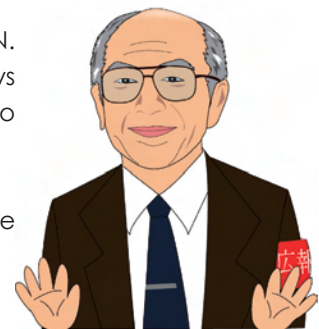
Editor's note

Among the AJCE activities, publicity is one of the important factors to achieve its objectives. NEWSLETTER, being published once a year, is playing essential role as a means of sending and receiving information from various countries and organizations all over the world. The editing concept of "NEWSLETTER 2008" is to disseminate information from Japan for strengthening ties with countries overseas".

As the FIDIC's member association in Japan, the first aim of the NEWSLETTER is to send messages to outside of Japan such that they can understand our activities. It contains i) Message of the AJCE president, ii) Special seminar on Red Book MDB Edition, iii) 2007 Annual seminar on Design-Built Project, iv) Seminar to promote capacity building and v) report on ASPAC regional association activities. Second objective is to introduce achievement of the consulting services by AJCE member firms in 2007 as well as to report on "Asian Water Conference". The third aim is to introduce the strengthening of collaboration between FIDIC MAs such as "2007 Young Professionals Exchange Program" between AJCE and Australia (ACEA), and "2007 KENCA Professional Engineers Seminar in Jeju". Lastly, the article was reported by JBIC (Japan Bank of International Cooperation) which participated in 2007 FIDIC annual conference (Singapore) for the first time.

The editorial policy in this year is to "Speak out to public" via AJCE BULLETIN. Publicity activities need both receiving and sending information. Relevant news and information from domestic and overseas sources are always welcomed to further promote mutual cooperation. We thank your support and advice.

Noboru SAKUMA, Chair Publicity & Relations Committee



AJCE NEWS LETTER April 2008

Publication: ASSOCIATION OF JAPANESE CONSULTING ENGINEERS (AJCE)
3-16-4, Ueno, Taito-ku, TOKYO 110-0005 JAPAN
Tel : +81-3-389-8471 Fax: +81-3-389-8472
Email: info@ajce.or.jp Web: <http://www.ajce.or.jp/en/index.htm>
Edit: AJCE Publicity & Relations Committee
Cover and Illustrations: Miho Yamato, Publicity & Relations Committee
Layout: Nihon Fukusha Kogyo Co.,Ltd.
2-3-10, Shinjuku, Shinjuku-ku, TOKYO 160-0022 JAPAN
Tel : +81-3-3352-8481 Fax: +81-3-3350-8944

AJCE Members

52 firms, 173 members, 12 supporting members

List of Member Firms

- | | |
|--|--|
| A Akeno Corporation
Akiyama Consulting Engineering Office | N Nakabori Soil Corner Co.,Ltd.
Nakanishi Consulting Engineering Office
Nakashio Consulting Engineering Office
Nagatomo Machinery Consulting Engineering Office
Nihon Suido Consultants Co.,Ltd.
Nihon Suiko Sekkei Co.,Ltd.
Nippon Civic Consulting Engineers Co.,Ltd.
Nippon Koei Co.,Ltd.
NJS Consultants Co.,Ltd. |
| C Chodai Co.,Ltd.
Chuo Kaihatsu Corporation
CTI Engineering Co.,Ltd.
CTI Engineering International Co.,Ltd.
Cooplus Co.,Ltd.
Creative Engineering Research Institute | O Ohno Chemical Machinery Consultant Ltd.
Ootsuka Engineering Office
Oriental Consultants Co., Ltd.
OYO International Corporation |
| D Docon Co.,Ltd. | P Pacific Consultants International
Pegasus Engineering Corporation
Plant Sekkei Co.,Ltd.
P.T.Morimura & Associates, Ltd. |
| H Hayabusa Consulting Engineering Office
Higuchi Consulting Engineering Office
Hirano Consulting Engineering Office
Hiroshi Tanaka Consulting Engineering Office | S Sakurai Giken
Shimizu Consulting Engineering Office |
| I IDEA Consultants Inc.
Ikeda Consulting Engineering Office
INA Corporation | T Takagi Consulting Engineering Office
Takeda Machinery Management Engineering Office
The Japan Electrical Consulting Co.,Ltd.
Toko Engineering Consultants Ltd.
Tokyo Engineering Consultants Co.,Ltd.
Toshihiko Ohmoto Project Consultant
Toshihiko Ohno Consulting Engineering Office |
| J Japan Bridge & Structure Institute, Inc.
Japan Port Consultants, Ltd. | Y Yachiyo Engineering Co.,Ltd.
Yamashita Suido Sekkei Engineering Office
Yuasa Consulting Engineering Office |
| K Kiso-Jiban Consultants Co., Ltd.
Kokusai Kogyo Co.,Ltd.
Kurihara Environmental Engineering Office
Kurosawa R&D Engineering Office | |
| M Meiken Consultants Co.,Ltd. | |

(2008.2.12)